

# *“BRAIN BEHAVIOUR COACHING”*

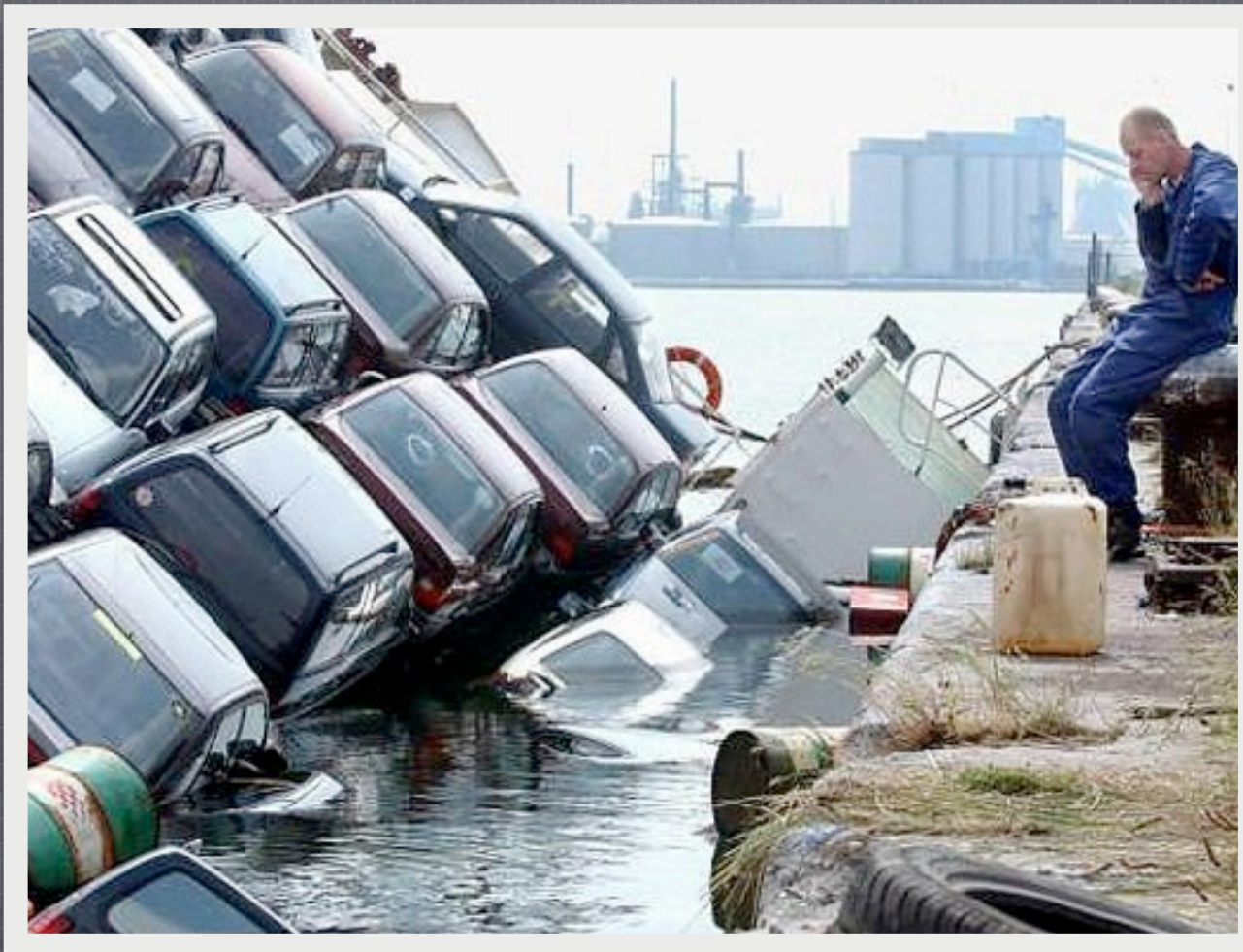
PETER WEBB





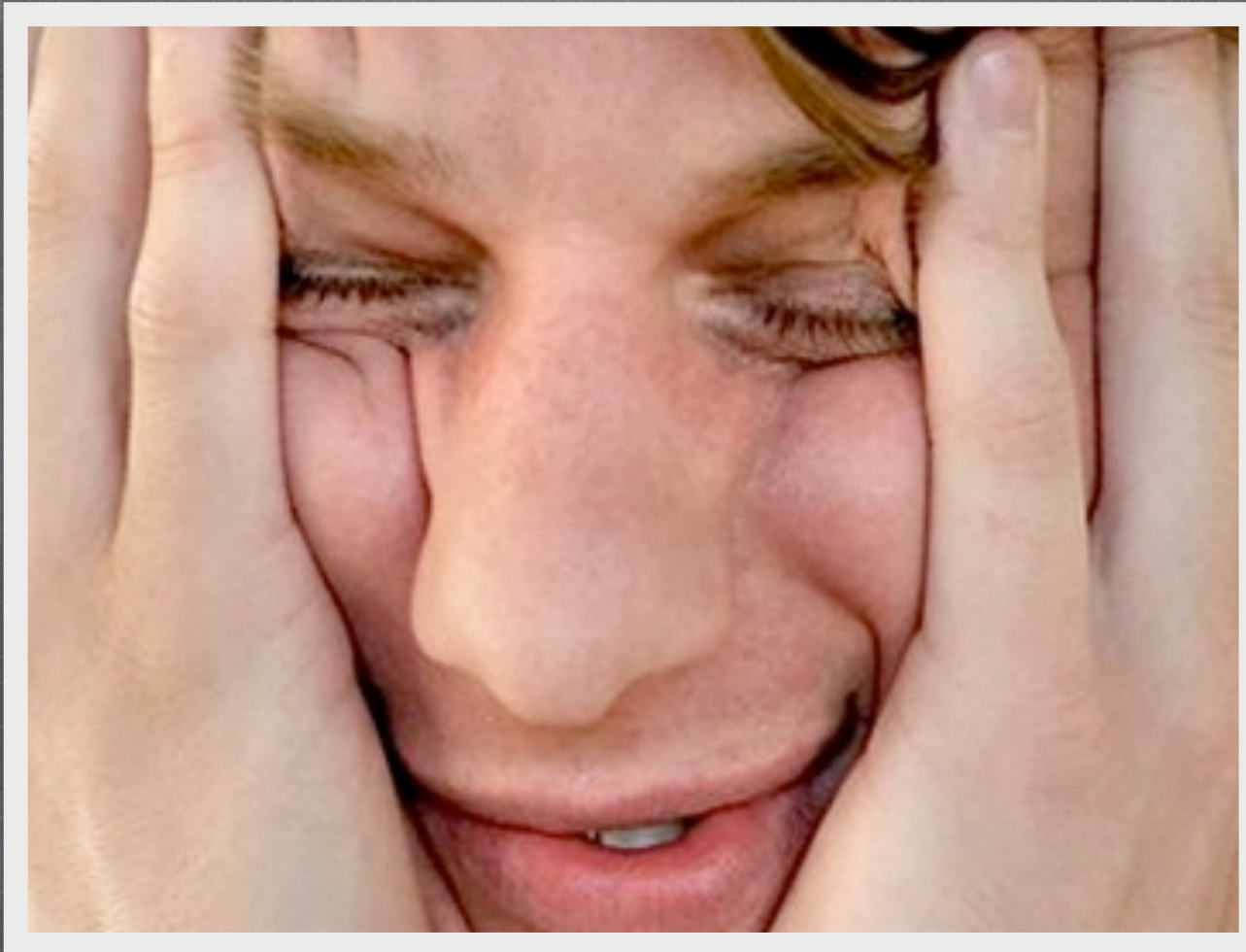
## 1. SIMPLE PROBLEMS REQUIRE REASON

*Can this decision be accurately summarized in numerical terms?*



## 2. NOVEL PROBLEMS ALSO REQUIRE REASON

*How does your past experience help you solve this particular problem?*



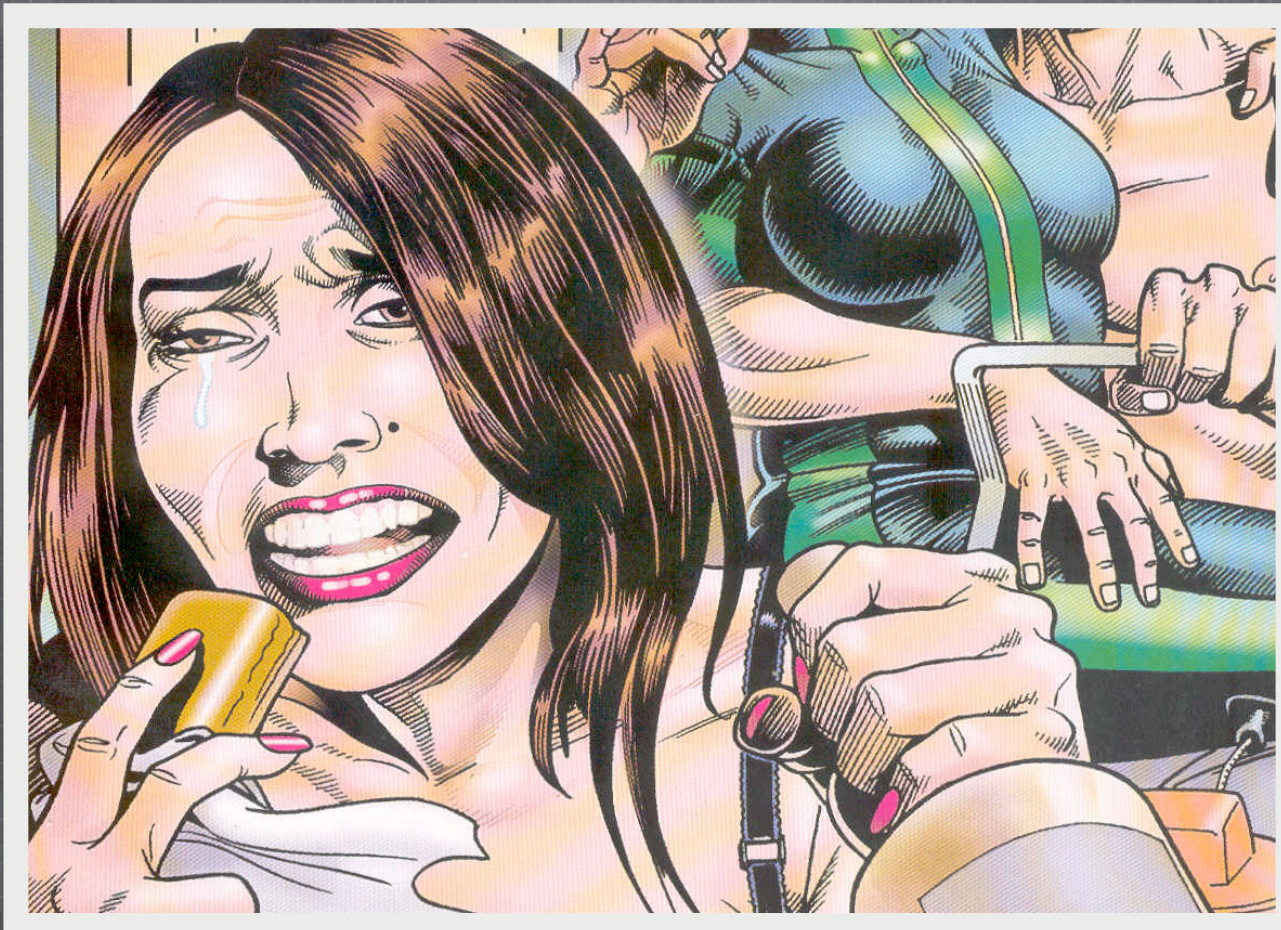
### 3. EMBRACE UNCERTAINTY

*What don't you know?*



#### 4. YOU KNOW MORE THAN YOU KNOW

*What do you feel about this decision?*



## 5. THINK ABOUT YOUR FEELINGS

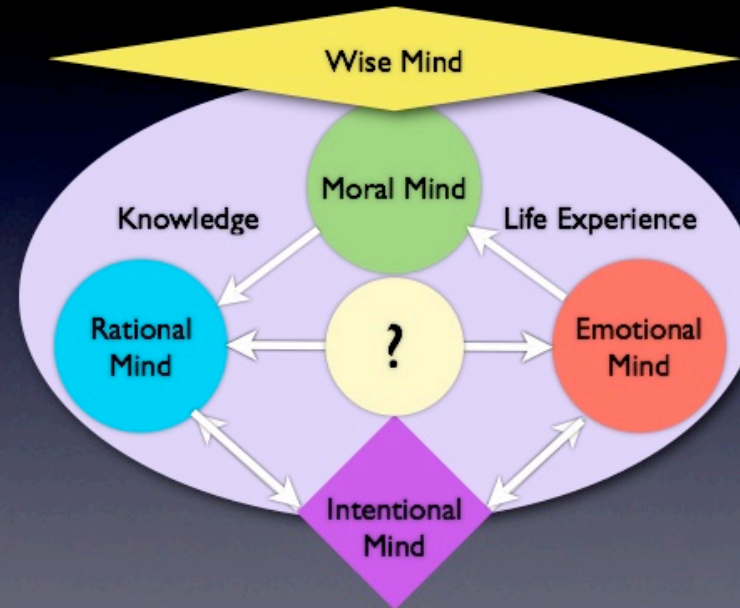
*What, or who, are you comparing this decision with?*



## 6. THINK ABOUT YOUR THINKING

*What's the best way to think about this decision?*

# “Bring Wisdom” Model



## HOW TO MAKE A WISE DECISION

*Listen to your internal conversations*

# “Coaching for Wisdom”

Peter Webb (2008)

<http://www.bringwisdom.com/>

© 2010 ITC Pty Ltd. <http://www.bringwisdom.com/>



DAVID B. DRAKE  
DIANE BRENNAN  
KIM GØRTZ

## THE PHILOSOPHY AND PRACTICE OF COACHING

Insights and issues for a new era